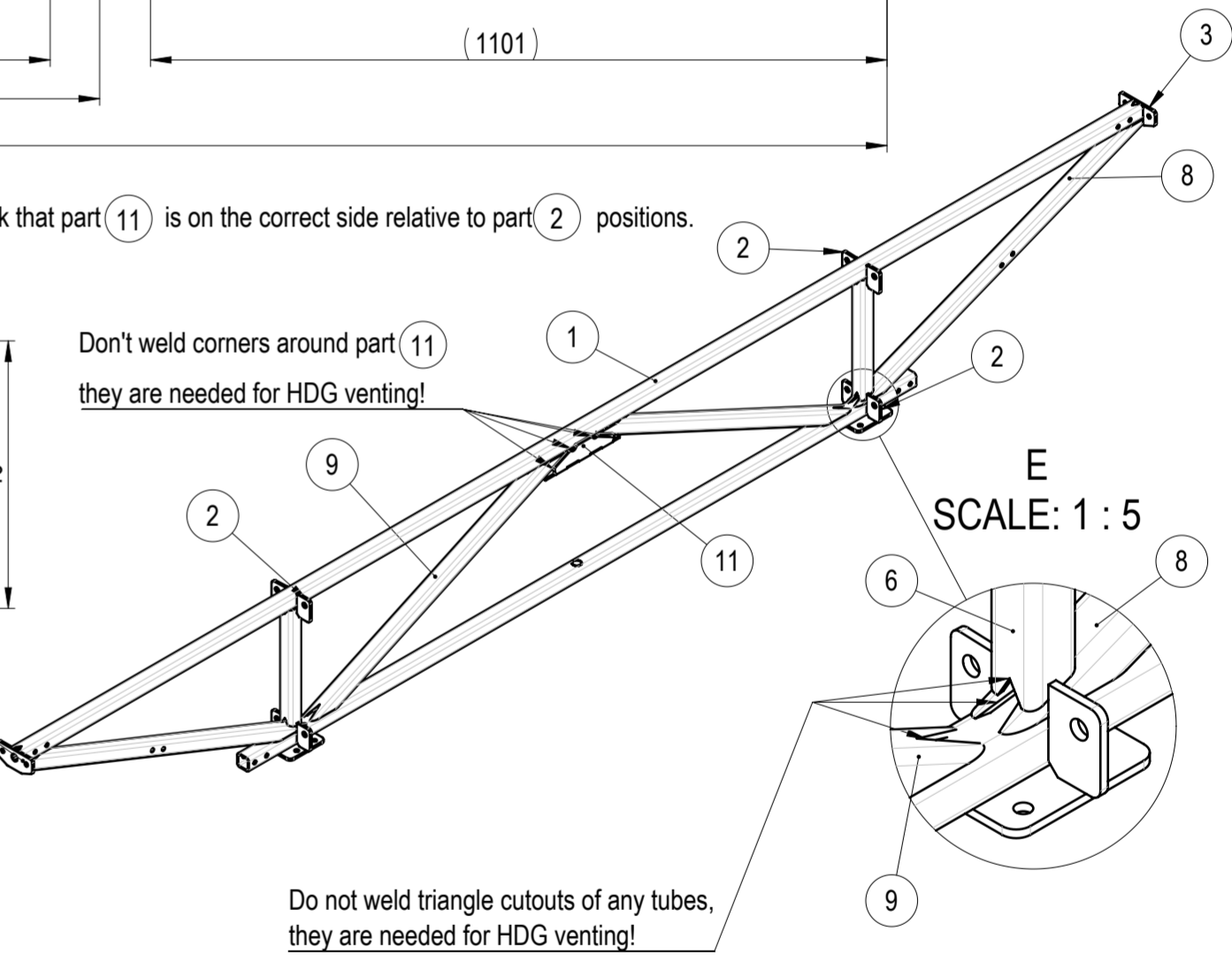
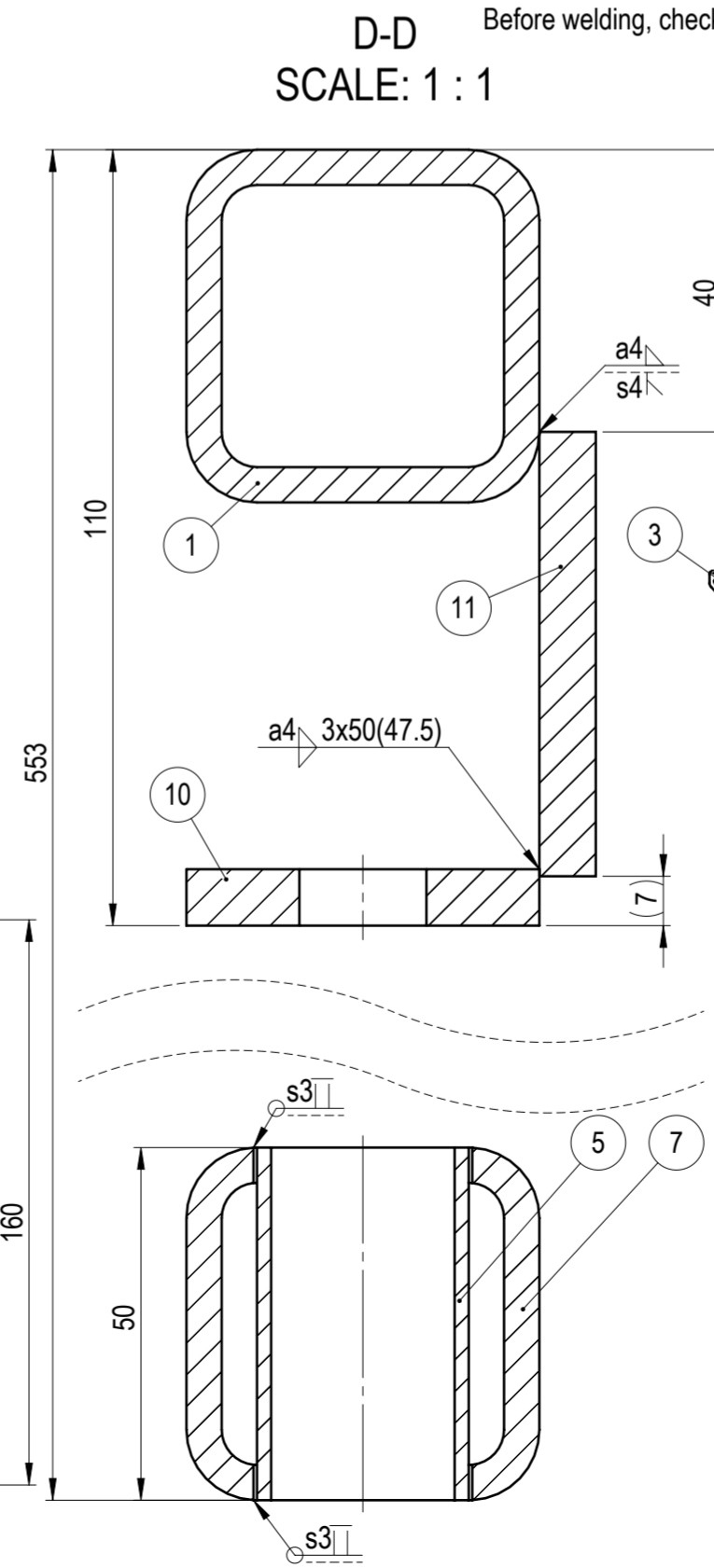
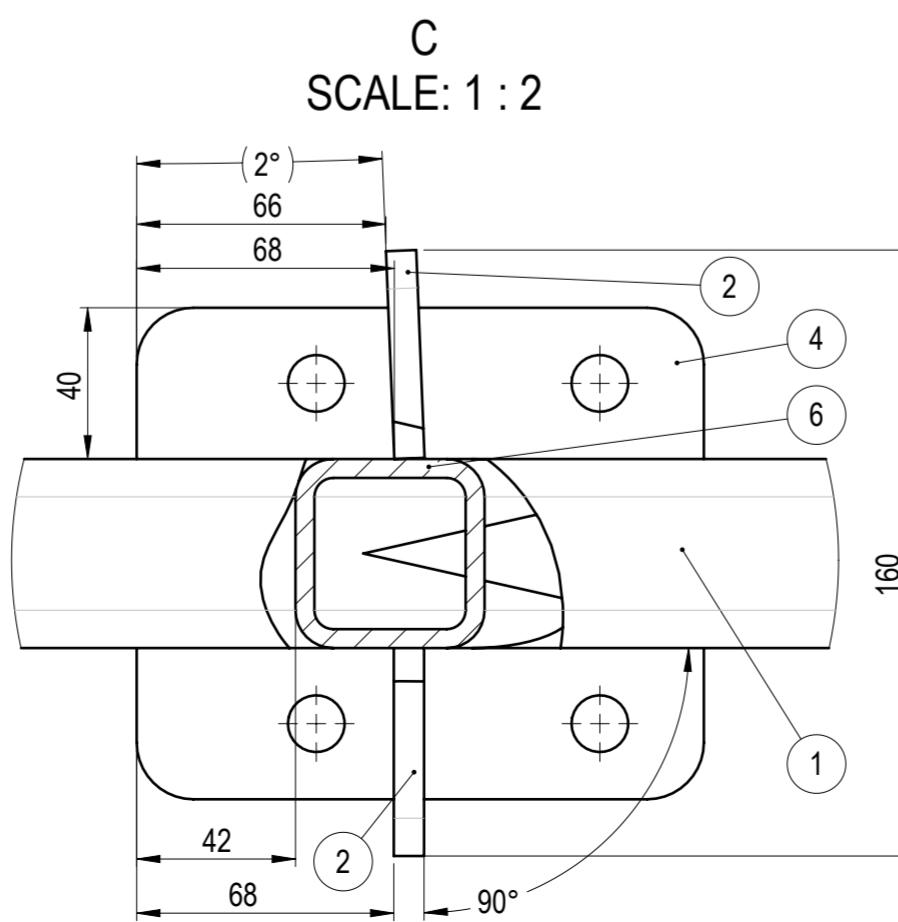
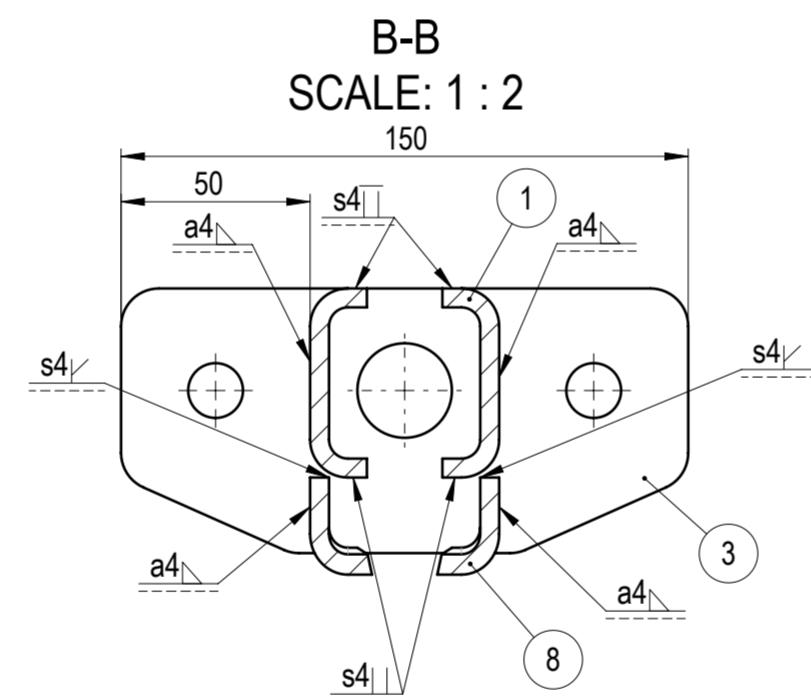
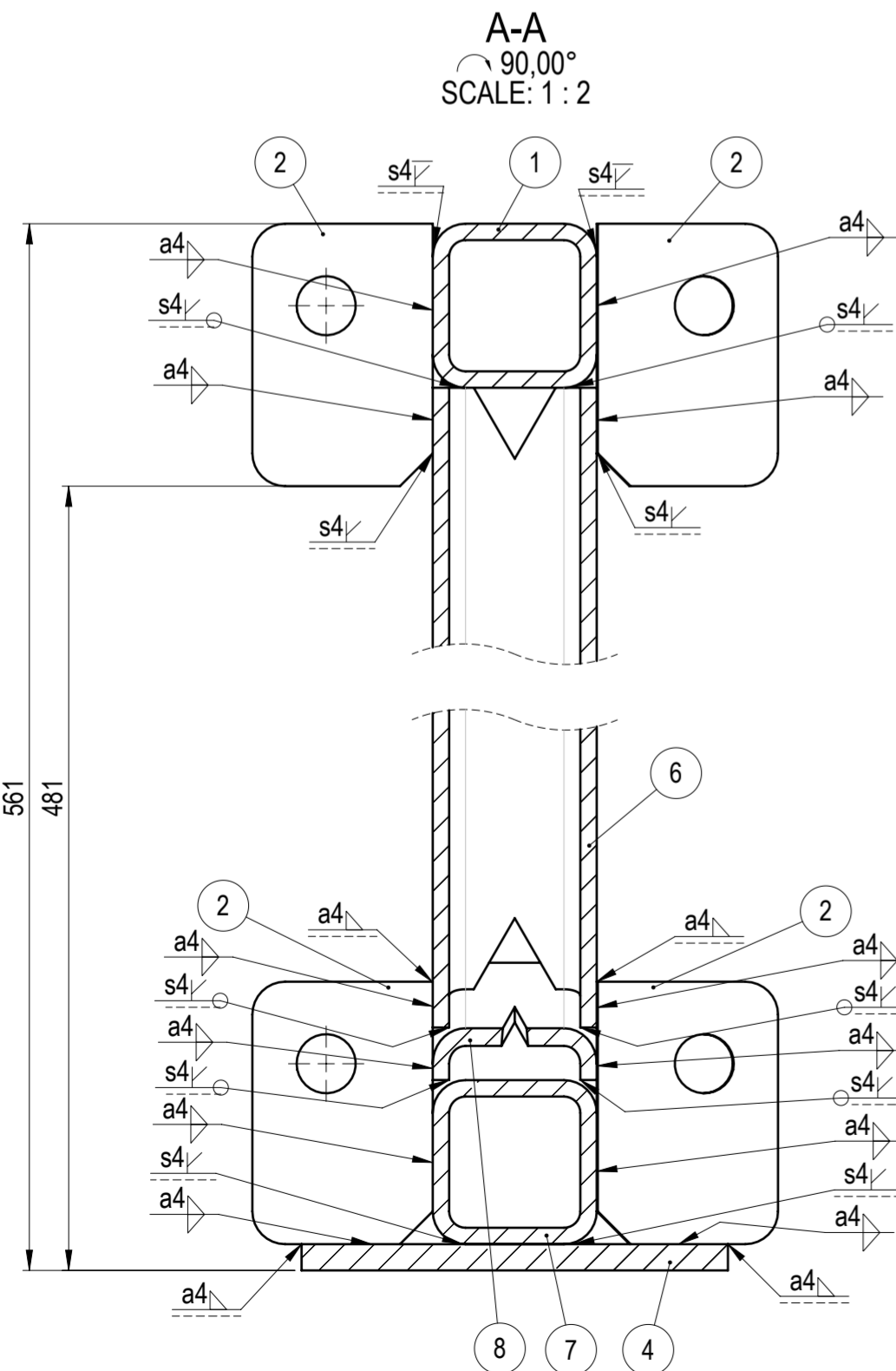


Note for welding:
Before welding, check that part 11 is on the correct side relative to part 2 positions.

Don't weld corners around part 11
they are needed for HDG venting!

Do not weld triangle cutouts of any tubes,
they are needed for HDG venting!



NO.	PART NO	DESCRIPTION	MATERIAL	PROCESSING	REVISION	WEIGHT	QTY
1	105-09221-01	Top tube	S355J2	CND		30.81	1
2	105-09221-05	Tie link flange	S355J2	LC		0.25	8
3	105-09221-06	Side flange 1	S355J2	LC		0.54	2
4	105-09221-07	Bottom flange hanger frame	S355J2	LC		1.16	2
5	105-09221-11	Sleeve	S235JR	CND		0.07	1
6	105-09222-01	Vertical tube 2	S355J2	CND		2.78	2
7	105-09222-02	Bottom tube 2	S355J2	CND		18.29	1
8	105-09222-03	Outside diagonal tube 2	S355J2	CND		7.73	2
9	105-09222-04	Inside diagonal tube 2	S355J2	CND		6.92	2
10	105-09222-05	Middle bracket 2	S355J2	LC		0.96	1
11	105-09222-06	Back plate 2	S355J2	LC		0.75	1

WEMPS ENGINEERING SERVICES

DESIGNED BY: D. Dislers
DRAWN BY: D. Dislers
TECHNICAL REF:

MATERIAL: SURFACE PROTECTION: HDG EN ISO 1461
WEIGHT: 91.180 Kg
MACHINING: ISO 2768 mK
DEBURR AND BREAK SHARP EDGES: DO NOT SCALE DRAWING
THERMAL CUTTING: ISO 9013 221
WELDING: ISO 13920 BF
REVISION: 04.06.2025
SCALE: 1:10
FORMAT: A2

PART NO. 105-09222-00
DESCRIPTION: Hanging frame weldment 2
SHEET 1/1